

# Emergency Aid Camp Infrastructure Community Water Filter

**Flow Rate:**

300 liters per hour\*

**Ultra-filtration Filter Capacity:**

>1,000,000 liters.

**Operating Life:**

>5 years\*\*

**Bacteria Retention:**

>99,999% (log 6)

**Virus Retention:**

>99,999% (log 4)

**MWCO:**

150,000 Dalton's (equivalent to 0.01 Microns)

**US Compliance:**

EPA-US National Primary Drinking Water Regulations under the Safe Water Drinking Act 95-523.

**Dry Weight:**

12kg

**Dimensions of Packaged System:**

Height: 480mm

Width: 250mm

Depth: 250mm

**Units Per Pallet:**

20

**Cleaning Procedure:**

120 microns mesh screen cleaning

Two ways cross flow, built-in cleaning system

Built-in flushing system

Built-in backwashing system

**Pressure Control:**

3.5 Bar security valve

**Warranty:**

1 year international limited

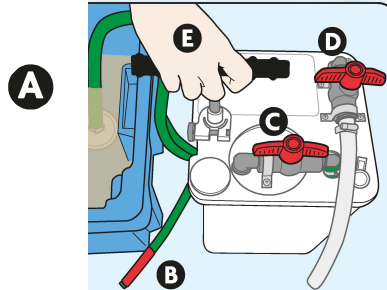
**Butyl Products Ltd.**

Lingfield House, 11 Radford Crescent, Billericay, Essex,  
CM12 0DW, United Kingdom. T: +44 (0) 1277 653 281  
E: [enquiries@butylproducts.co.uk](mailto:enquiries@butylproducts.co.uk) W: [butylproducts.co.uk](http://butylproducts.co.uk)

# Emergency Aid Camp Infrastructure Community Water Filter Kit HF

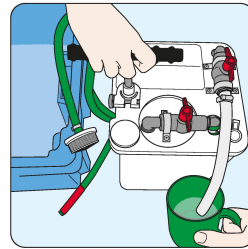


1. **NEVER** drink water from pipe with the red stopper.
2. Empty dirty water in the bottom of the box or bucket once a week.
3. **DO NOT** store in sunlight. The heat could damage the filter.
4. **CHECK** water is clean-



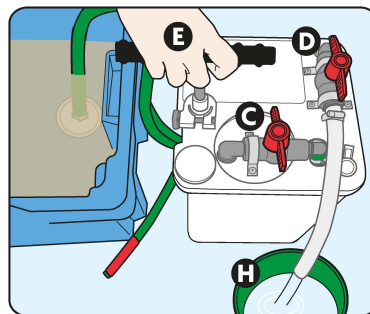
1. • Inlet pipe (A) in dirty water box.  
• Red ended pipe (B) outside the box.  
• Taps (C), (D) as shown above.  
• Pump (E) until water comes out of red ended hose (B).

2. • Turn taps (C), (D) as shown above.  
• Pump (E) for clean water (H).



3. • After use, turn tap (D) to its original position to close.

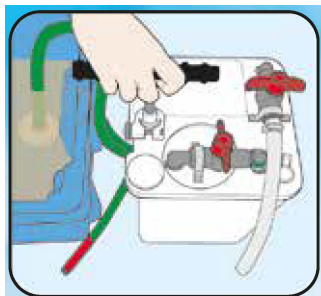
- Take inlet out of dirty water.
- Turn taps as shown.
- Put outlet pipe into a mug of clean water.
- Pump.
- If bubbles keep coming out of the outlet pipe, **THE FILTER MAY BE FAULTY. STOP USING IT AND CONTACT YOUR SUPPLIER.**



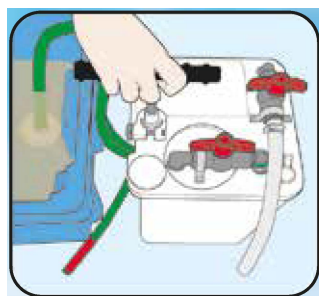
## Butyl Products Ltd.

Lingfield House, 11 Radford Crescent, Billericay, Essex,  
CM12 0DW, United Kingdom. T: +44 (0) 1277 653 281  
F: +44 (0) 1277 657 921 E: enquiries@butylproducts.co.uk  
W: butylproducts.co.uk

# Emergency Aid Camp Infrastructure Community Water Filter Kit HF



1. Turn **red taps** as shown. Pump 4 times.



2. Turn **red taps** as shown. Pump 8 times.

3. Turn **red taps** as shown. Pump clean water.

4. If water flow is still low repeat 1, 2 and 3.

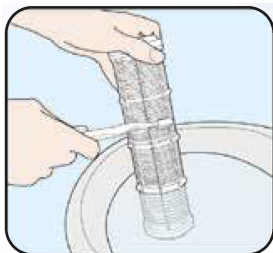
## CLEAN THE INLET PIPE AND PRE-FILTER



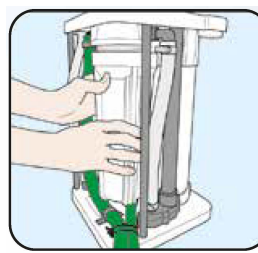
5. Clean the inlet pipe.



6. Unscrew the pre-filter housing.



7. Clean the mesh pre-filter housing.

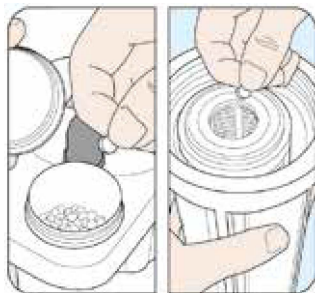


8. Replace the housing.

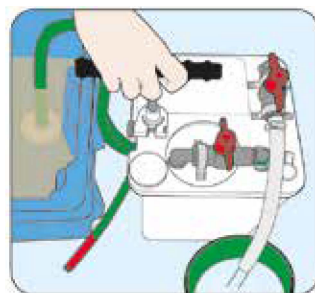
## CHEMICALLY WASH - IN THE EVENING



9. Unscrew the pre-filter.



10. Take the 5 tablets from the pill pot. Put in the pre-filter. Wait 10 minutes. Then replace the housing.



11. Turn **red taps** as shown.  
12. Leave filter overnight

